

BUNGALOWS BY THE BEACH

PRIME LOCATION DIRECTLY ON THE BORDER OF
VENICE BEACH & SANTA MONICA

C A L I F O R N I A



- ➡ TWO BEDROOM HOUSE
- ➡ ONE AND A HALF BEDROOM BUNGALOW
- ➡ TWO BEDROOM LOFT

Happy Beach Living. Work and relax in a bright and peaceful house or bungalow one half block from the Beach and one half block from the shops, cafes and restaurants of Main Street of Santa Monica. Bungalows By The Beach are fully furnished bungalows with private patio, garden and off-street parking.

Inquire at bungalows@cwdp.com

TWO BEDROOM HOUSE

\$1,850 per week

Approximately 1,100 square feet with two bedrooms with one king-size bed and one queen-size bed. Large living room, full kitchen and dining area. Wireless Internet. Expansive landscaped yard. Bathroom with shower and bath tub. Danish oak hardwood floors in living room and hallway.



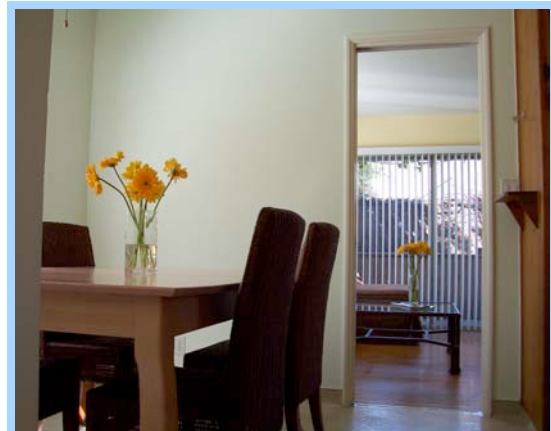
Bedroom with King Bed



Living Room



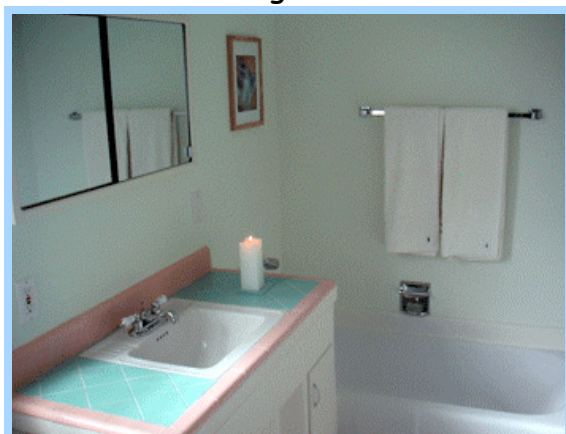
Kitchen



Dining Table



Yard



Bathroom

ONE AND A HALF BEDROOM BUNGALOW

\$1,300 per week

Approximately 800 square feet. One bedroom with a queen-size bed and one smaller adjoining bedroom with a double futon.

Large living room and full kitchen. Shared courtyard.

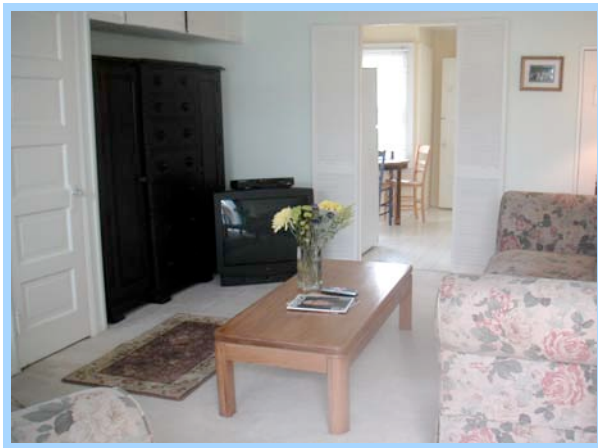
Two bathrooms with showers and bath tubs. Wireless Internet.



Full Bedroom into "Half Bedroom"



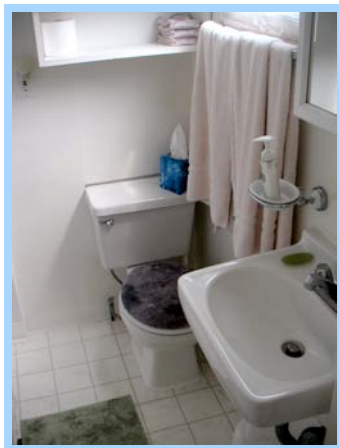
Living Room



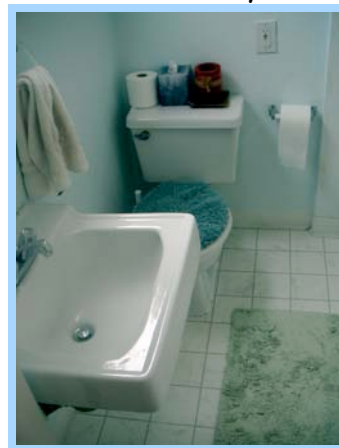
Living Room into Kitchen



Shared Courtyard



Bathroom 1



Bathroom 2

TWO BEDROOM LOFT

\$1,350 per week

Approximately 700 square feet with large loft sleeping area, living room with a pullout sleeper sofa, front porch, bedroom, kitchen and bathroom with bathtub. Shared courtyard. Wireless Internet.



Bedroom into Living Room

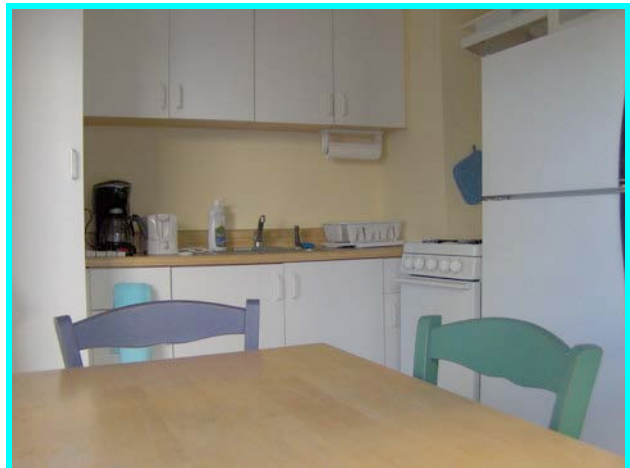


Living Room

The living room can sleep one or two children with its sleeper sofa. A ladder from the living room goes up to a pretty big naturally lighted loft with one double and one single futon. The bedroom has a queen size bed. Sleeps up to 5 adults or family of 6 with children. The place has a little funkiness to it in that you walk through the bedroom to get to the living room from the kitchen and bathroom.



Queen-size Futon in Loft



Kitchen



DIRECTIONS

From 10 West

- take 10 W
- exit at 4th/5th Street
- left on 4th Street
- right on Pico Blvd
- left on Main Street
- right on Navy Street
- end at 60 Navy Street

Parking is directly behind the property on Navy Court.

Every unit is entitled to one free parking space.

Got **pets**? Bring them for an extra **\$20 / day**.

ALL UNITS ARE NON-SMOKING.

CHECK-OUT TIME IS 10 AM

Please go to www.maphawk.com for detailed maps of the area

**Navy Street & Pacific Avenue
Venice, CA 90291**



enjoy your stay

C W